

December 2020

*Happy and Safe
Holidays Everyone!*

IN THIS ISSUE

Pages
1-4 Night on Hirvela's CNW
Page 5 Mike's Minute
Page 5 Dec.'s Clinic & Contest
Page 6 November's Clinic &
Contest
Page 7 Member News
Page 7 FVD Meeting Schedule
Page 8 New ZOOM meeting
Procedures
Page 9 Basic FVD info; FVD
BoD; David Leider's new
book, "The B&O Chicago
Terminal History"

Semaphore Editor, Walt Herrick

Next FVD Meeting:
Sunday, December 20
1:30 pm via ZOOM*

Contest: 1 Yard Switcher

**Clinic: Layout Wiring by Eric
Peterson**

*See page 8 for complete
information about the new FVD
ZOOM meetings, and how clinics
and contests are conducted via
ZOOM.

Fun Stuff by Jim Allen

Here's a very small rapid transit vehicle. I'm not sure what exactly it is used for, but it appears that it might be the power unit for a light rail system somewhere in Europe.

Night Time on the CNW's North Shore Sub

Article and photos by Walt Herrick and Mike Hirvela



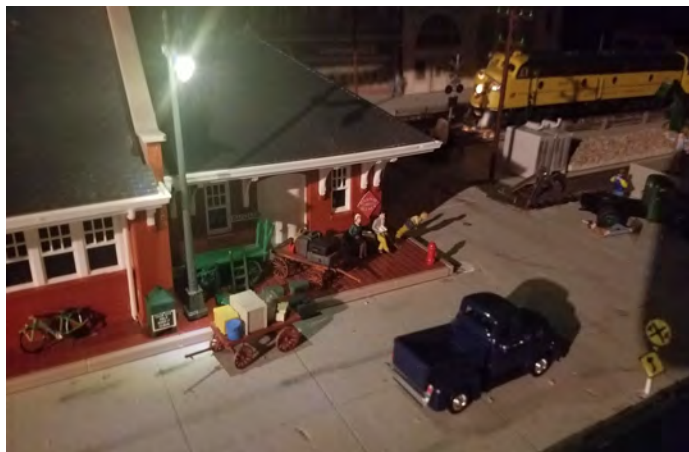
Earlier this month FVD Superintendent, **Mike Hirvela**, sent me some great photos of a layout project he is working on. The first photo he sent is above and leads off this story. The project is installing street and building lights on his Chicago and Northwestern North Shore Subdivision. As you can see from Mike's photo, his lighting project is going quite well thanks to the **Woodland Scenics Just Plug** lighting system he's using. Mike's photos inspired me to work with Mike to do a *Layout of the Month* article with *all the photos taken at night*. So, here it is, "**Night Time on the CNW's North Shore Sub**". Our story starts on page 2. WH



Night Time on the CNW's North Shore Sub con't



We begin in Great Lakes, IL at the Navy Exchange warehouse above, where CNW Alco switcher #1227 is about to pick up an empty 40 foot CNW box car, an empty CNW flat and an empty CB&Q hopper out of sight of the camera. The Navy Exchange warehouse is served by the "Gurnee Turn" which originates in Waukegan, and services the industries along the CNW main line in North Chicago, Great Lakes and Gurnee as needed, before returning to Waukegan. Due to the volume of business in North Chicago and Gurnee, two turns are usually run every week day, and once a day on weekends and holidays. MH To the right I found an interesting shot of the 1227 through the material towers of the Philadelphia Quartz Corporation facility in Gurnee. The Alco S2 is slowly heading into the PQ siding to pull an empty gondola. The PQ facility makes products with silicates (sand) and regularly receives gondolas of raw sand. WH



Chicago & Northwestern passenger train #120 stops briefly at the North Chicago station on its way to Chicago (above left). Powered by E8A #5024-B, the 120 does yeoman work for the Northwestern. Besides providing valuable transportation to Milwaukee and Chicago for the folks in northern Wisconsin and Michigan's Upper Peninsula, it also picks up empty express cars in Manitowoc, Sheboygan and Port Washington. The express cars are dropped off at the station in Milwaukee where they will be loaded with newspapers, magazines and advertising stuffers, and then sent north early tomorrow morning. The 120 departed Green Bay today at 3:45 pm and ran down the "shore line" to Manitowoc with its typical consist of five coaches, before adding the express cars bound for Milwaukee. It is due to arrive in Chicago at 10:30 pm. At the upper right, we see the 120 pulling into the Lake Forest station where a couple of baggage wagons are sitting loaded with boxes and other cargo bound for Chicago. MH

Night Time on the CNW's North Shore Sub con't



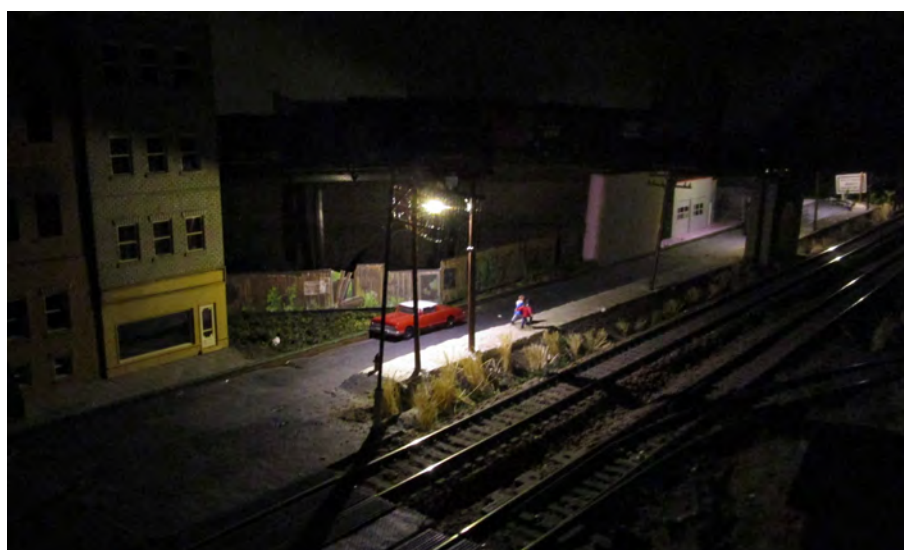
Tonight's Gurnee Turn local is shoving a C&NW gon loaded with northern Illinois sand into the PQ Corp's plant in Gurnee (upper left). EMD power heads up the following night's Gurnee Turn as SW600 #1280, spots an LP tank car at the Amerigas Company siding in Gurnee in the upper right photo. The 1280 began service on the CNW in March 1954. WH



Extra #1774 originated in Milwaukee and is being pulled by two brand new GP18s tonight. It's headed for Proviso Yard west of Chicago. We see the train rolling through North Chicago in the middle photo, and Gurnee in the lower photo. It has dropped cars in Racine, Kenosha and Waukegan en route. MH

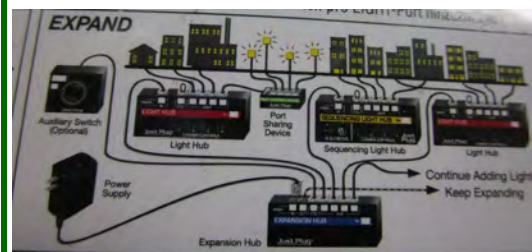
Night Time on the CNW's North Shore Sub con't

The *City of Two Rivers* car ferry (right) represents ferries from the C&O, Ann Arbor, Pere Marquette, and Grand Trunk Railroads on my layout. In theory, the ferries arrive and depart the Jones Island slip in Milwaukee all through the day and night. Walt's "full moon" night shot of the ferry is of the Grand Trunk ferry which arrived about 10 pm. MH Mike titled his excellent, moody night photo below as "Between Trains in North Chicago". The switch lamp hanging in Mike's basement (lower right photo) has been in the Hirvela family for years. Mike inherited it from an uncle. He lit it with only a 7W nightlite bulb which is surprisingly bright! WH



Modeler's Tip: Easy Layout Lighting by Mike Hirvela

Putting lights on my model railroad has been daunting for me for the longest time. I had some difficulty understanding the electrical stuff that went along with putting in the lights. Still do. So, when Woodland Scenics came out with its "**Just Plug**" Lighting System I was interested. The system seemed to be uncomplicated. That it is and more. It is a well thought out system that works as designed. I'm not going to go into detail here about Just Plug, except to say it has made my layout lighting project pretty easy and I would recommend it. The system offers a whole package: power source, easy connections, a wide variety of street lights, interior and exterior building lights, vehicle lights, etc. All you do is set up "hubs" to connect your lights to, and plug your lights into the hubs. (Two of my hubs are seen to the right.) A feature I really like is that you can dim each light. **Thank you Woodland Scenics!**



November's Clinic and Contest

Mark Vaughn presented a great clinic in November on, “**LCL Traffic Before UPS and FedEx.**” This clinic was particularly useful for those of us modeling in eras before the mid to late 1960s. Mark told us the fascinating story of how LCL (less than a car load) shipments were handled by railroads in the 1930s to the late 1960s when railroads shipped anything from consumer purchases made at Sears Roebuck, to engine blocks from Ford or GM. Excellent photos, graphics and information made this a great clinic. Thank you Mark! Our **December 20 clinic is “Layout Wiring” by Eric Peterson.** This will be another good one with valuable information, so check it out! WH



Leif Hansen's "Grandmas Jean's B&B" was **First** in the voting for **November's "Unfinished Projects" contest.** Leif's model seen above left, is being built from a Wild West Model's laser kit. **Jim Osborn** took **Second** with his **scratch built, 40 foot, SOO outside braced box car.** This is the third of four scratch built cars Jim needs for his AP "Cars" certificate. **Third** in the voting was **Bob Hanmer's** trio of **DM&IR SD9s,** a project Bob started 20 years ago and is just now completing! **December's contest is: One Yard Switcher.** Let's see those "yard goats" in December, everyone! WH



December's Clinic: **Layout Wiring** by Eric Peterson

December's Contest: **1 Yard Switcher**

- **Enter** with 1-3 phone photos before Noon Friday, December 18. See the FVD web site Contest Page for the web address to send your photos.
- **VOTE!** Before Noon December 20. See the FVD website for voting instructions.



Art Jones' B&O, EMD switcher

Mike's Minute by FVD Superintendent Mike Hirvela

Our December issue of the Semaphore wraps the calendar year (and 2020 has been a doozie!). While we think of hibernating in our basements during the winter months, we now—unlike the “old days”—have many more opportunities to get railroad and model railroad information and education than just model railroading magazines, special issues and books. Not that I'm against any of those, I love 'em. But, look what other resources we have now right at home such as: tons of videos on You Tube; hundreds of general and specialized websites, Facebook pages and other social media; and similarly, hundreds of blogs devoted to one model railroading topic, layout. etc. or another. What a time to be in the hobby! Not only do we have the largest variety of products available at any time and the best quality of products at any time, we have the most information available on just about any modeling or prototype topic imaginable. So, while you are hunkered down in your basement (or garage or spare room) train room for the winter, why not plan on using some of the tremendous resources now available to make you model railroading “life” a lot easier? It's all right there at the click of your mouse. If you don't know where to look, just “Google it”, as they say, to get your answer or at least get you pointed in the right direction. And please don't forget that the FVD offers you an opportunity to get informed and educated (and maybe even entertained!) at our monthly meets (now conducted via ZOOM due to the coronavirus) and our web site (see Jim Osborn's article below).

Speaking of monthly meets, November's FVD meet was particularly good thanks to **Mark Vaughn's excellent clinic on LCL traffic**. For those wanting more information on LCL, Mark wrote a great article on LCL for **Kalmbach's April 2007 Realistic Layouts** special issue. In November we also had a **great contest** with lots of participation and a wide variety of entries. My thanks to our **Contest Trainmaster, Jim Landwehr** for his contest organizational efforts, and **Jim Osborn** for his web wizardry in ZOOM, and for helping us to organize our meets, contests and contest voting on line. Be sure to **join us December 20th for our December meet**. The web meeting portal opens at 1:00 pm for you to join the meeting early and talk with fellow members on line. **The meet starts at 1:30 pm**. The December meet comes complete with rail news, a clinic, a contest, a joke or two from yours truly, and a good time talking trains.

Finally, I extend a joyous holiday season greeting to all our members and families. I hope you have wonderful memories of previous holidays with your families, and I hope those memories contain all the trains you wished for. In my own case, with Christmas came an expectation of adding something to my Lionel train layout in the basement. It took my father about half a week's wages to obtain a special engine, car or operating accessory. No wonder the lay-a-way plans were so popular! It still amazes me that my folks were able to afford the goodies we found under our Christmas trees. Adding and incorporating some train item into the layout was as much a part of my growing up years as baseball, bicycles and swimming in the big lake in summer. When I discovered Mark in town who also had trains, I was able to spend many a hot summer day in his cool basement, creating track plans on the basement floor, experimenting with electrical circuits and signals, and trying to run trains realistically. (Well, at least we thought so!) Somewhere along the line I discovered two-rail HO scale and other guys in the area who modeled in that scale. The rest is history as they say. I'm looking forward to our December 20 Fox Valley Division meet via ZOOM. I hope you are, too!

What's on Our Web Site The Fox Valley Division's web site offers you a wealth of model railroad, prototype railroad and FVD/NMRA information. Go there to find information about FVD meeting dates, how to use our ZOOM meeting technology, clinics, contests, news, special events, names of FVD board members and how to contact them, as well as NMRA Midwest Region and National convention dates and information. You'll also find information on local clubs, hobby shops, area model railroading, FVD member layout photos, railroading events, and more! The web site is updated regularly with new and timely information, so I invite you to take a look at it periodically. The FVD web site address is:

www.foxvalleydivision.org

Jim Osborn

Member News

Fox Valley Division members, **Jim Landwehr** and **Mike Hirvela**, are on the ballot for **Midwest Region** positions this year. Jim is running for re-election as a **MWR Director-at-Large** and Mike is running for the office of **MWR Vice President**. Ballots are included in the Winter edition of the Midwest Region's newsletter, the *Waybill*. Or, you can save a stamp and vote on line at the MWR web site: www.mwr-nmra.org. Your completed ballot must be received by the Midwest Region Election Committee by Sunday, January 31, 2021....Our FVD **November contest winner Leif Hansen**, reports that the unfinished laser kit he entered (the contest was "One Unfinished Project") was the "Silverado House" from **Wild West Models**. Leif says the kit and its excellent instructions made building this model a joy....Congrats to **Mike's Minute** columnist, **Mike Hirvela** who had a recent MM column excerpted in the *NMRA Magazine's Division Business Car* column. See "**Is Model Railroading Too Expensive?**" on page 18 of the December 2020 issue of *NMRA Magazine*. ...Last but not least, **the FVD's Board wishes you and yours the Safest and Happiest of Holidays this year!** WH



The FVD's **Jim Landwehr** (left) is running for re-election as a Director-at-Large in the Midwest Region of the NMRA, and FVD Superintendent, **Mike Hirvela** (right), is running for MWR Vice president in the current MWR elections. The election is going on now and ends January 31, 2021. MWR *Waybill* photos.

2020 - 2021 Fox Valley Division Meeting Schedule

Meetings are held from **1:30 to about 4:00 pm** (except as noted under "Other" below). **This year all meetings will be presented on line using ZOOM virtual meeting technology.** See page 8 of the newsletter or the division's web site for complete instructions on how to use ZOOM and participate in the meetings. For the latest clinic and all FVD news and information, visit FVD's web site at www.foxvalleydivision.org.

<u>Date</u>	<u>Clinic</u>	<u>Contest</u>	<u>Other</u>
December 20	Layout Wiring by Eric Peterson	1 Yard Switcher	1:30 pm start on ZOOM
January 17, 2021	3D Printing by Phillip Burnside	1 Open Load	1:30 pm start on ZOOM
February 17	Flat Buildings for Your Layout by Charles Malinowski	1 Over, Under, Around & Through	1:30 pm start on ZOOM
March 21	The Pursuit of Realism by Lance Mindheim; facilitated by Gary Saxton	1 Locomotive	1:30 pm start on ZOOM
April 18	1906 Crystal Lake, IL Depot Diorama by Walt Herrick	1 Illuminated Model	1:00 pm Start on ZOOM Annual Officer Elections
May 16	Scratch Building Cars for the AP Program by Jim Osborn	12" x 12" Diorama with Repurposed or Retired Rolling Stock	1:30 pm start on ZOOM
May 20—23	Midwest Region Annual Convention, "The Rockford Railroad Convention" * in Rockford, IL. for information see the Rock River Valley Division's web site: www.rrvd-nmra.com		
July 4 - 11	NMRA 2021 National Convention, "Rails by the Bay"* in Santa Clara, CA. See the web site for more information: https://www.nmra.2021.com		

***Note: both the MWR "Rockford Railroad Convention", and the National NMRA "Rails by the Bay" Convention will hopefully be run as scheduled. Both events however, are subject to Covid-19 mandates at the time and place of the event.**

Fox Valley Division ZOOM Meeting Instructions

On September 20, we will restart our monthly FVD meetings using the popular virtual meeting technology called ZOOM. Now any of us with a personal computer, notebook or smart phone should be able to attend the meet without having to worry about being contaminated by any disease! Your FVD Board believes ZOOM meetings could really boost meeting attendance and contest participation. Here's the info you need to participate in our ZOOM meets:

Email Address needed

- We must have your email address in order to send you the login credentials for each ZOOM meet. (If you do not receive the Semaphore notice each month via email, then we do not have your email address on file.)
- To add or change your email address, point your browser to the FVD web site <http://www.foxvalleydivision.org/>
- Click on the link at the top of the page just below the blue banner.
- Complete the form to add your email address to our address list.

ZOOM Meeting Procedures

- If you do not have the ZOOM app installed on your computer, please download it and test it out at one of the webmaster's Orientation Sessions prior to the September 20 meet. The ZOOM app is FREE. Orientation sessions will be held Sunday, September 13 at 1:30 pm, and Wednesday, September 16 at 7:00 pm.
- You will follow the same ZOOM procedures for each meet you attend.
- About a week before the meeting date, the FVD Webmaster will email you an invitation to the meet that will include a link to the meeting with your login credentials.
- Also included in the email will be a link to the FVD Timetable web page where you will find PDF downloads for a 1 page "FVD ZOOM Meeting Quick Guide", "ZOOM Meeting Procedures", and other help topics you may find useful. Tip: you may want print the Quick Guide to have for reference at the meeting.
- For security purposes, please do not post these credentials on any social media sites.
- Note: FVD meets are not being recorded and will not be available for later viewing.

Meeting Day

- The meeting "window" will be open about 30 minutes before the scheduled start of the meet.
- To join the meeting, click on the link in the email meeting invitation. You may be asked to do a short download or update, and you may be put in a ZOOM waiting room prior to the meeting. If so, the meeting host will shortly admit you to the meeting.
- After you are admitted, sit back and "enjoy the show".
- If you get stuck, email the webmaster at website@foxvalleydivision.org
- When the meeting is over, click the "Leave Meeting" button and you will go back to your computer's normal operation.

ZOOM Contest Entries

- With each meet invitation you will also be given instructions on how to submit a contest entry, and how to vote for the entry of your choice. Note that submitting a contest entry and voting will be done before each meet with our ZOOM meetings, not during the meet as we do when we are meeting live.
- With ZOOM meets, contest entries are limited to 1 model per contest. So, if the contest is "locomotives" you may enter one locomotive and no more.
- To submit an entry, take 1 - 3 photos at different angles of your model. Email your photos to the special contest link provided in your invitation email. Photo Tips: 1) Phone camera photos are fine, 2) Make sure there is enough light on your model, 3) "Fill the frame" with your model—in other words, don't take "long shots" of the model.
- **Contest Entry Deadline: Noon the Friday before the Sunday meet.** Early entries are encouraged.

ZOOM Contest Voting

- About two days before the meeting you will be emailed a meeting reminder and contest voting instructions.
- All contest entries will be anonymous.
- **Members may vote for any time from Noon the Friday before the meet, to Noon the morning of the meet.** Voting is done on line by clicking on the special link provided in the meeting reminder email, **or you can:**

CLICK HERE TO VOTE FOR YOU FAVORITE MODEL
- Winners will be announced at the meet.

See the FVD web site www.foxvalleydivision.org/fvd2016/timetable.v2.html for full ZOOM info.



About the Fox Valley Division

If you receive this newsletter you live in the Midwest Region and Fox Valley Division of the National Model Railroad Association or NMRA. The Fox Valley Division (FVD) includes all of Lake and McHenry, and parts of Cook and Kane Counties in northeast Illinois. About 180 members of varied ages and modeling ability levels belong to the FVD. Almost all modeling scales are represented in our division. Membership in the division is free as are the Semaphore newsletters.

2020 –2021 FVD monthly meetings will be held September through May on line via ZOOM virtual technology per the schedule on page 6. Each meeting features a clinic, model contest, and information of interest to the membership. Outings, layout tours, and operating sessions may also be held when Covid 19 protocols are lifted.

We encourage you to take advantage of all the FVD has to offer. We are here to answer your questions, help improve your modeling, and help you better enjoy the great hobby of model railroading. Visit us on the web at:

www.foxvalleydivision.org.

The Baltimore & Ohio Chicago Terminal History



David J. Leider

David Leider's new book "The B&O Chicago Terminal History" is available for holiday gift giving! To get your copy email David at: sooauthor@netzero.net

FVD's monthly meetings this year are on the internet via ZOOM virtual meeting technology (see page 8).

- Regular meeting time is: 1:30 to about 4:00 pm
- 2020 – 2021 meeting dates, contest and clinic info are on page 6 of this newsletter.

FVD web site: www.foxvalleydivision.org

FVD mailing address: Fox Valley Division
Midwest Region-NMRA
P.O. Box 1535
Arlington Heights, IL
60005-1535

Fox Valley Division Board*

Superintendent, **Mike Hirvela**

Assistant Supt., **Denis Zamirowski**

Chief Clerk, **Richard Hoker**

Paymaster, **Tim Kleimeyer**

Achievements & Contests, **Jim Landwehr**

Clinics & Programs, **Gary Saxton**

Membership Services, **Erich Abens**

Membership Promotions, **Mike Hirvela**

Web Technologies, **Jim Osborn**

Public Relations, **Walt Herrick**

Semaphore Editor, **Walt Herrick**

Ways & Means, Vacant

*Contact information for all FVD Board members is available on the division's web site:

www.foxvalleydivision.org