

THE SEMAPHORE



April 2019

FOX VALLEY DIVISION • MIDWEST REGION



1:00 pm start for our April 28 meet!

Great Lakes Industrial RR
article and photos by Walt Herrick

INSIDE THIS ISSUE

- Pages
1-4 Great Lakes Indus. RR
Page 1 Fun Stuff
Page 3 Modeling Tip
Page 4 April Election Bios
Page 4 MWR/TLR Convention
Page 5 Mike's Minute
Page 5 March Clinic & Contest
Page 5 Cook Special Run Reefer
Page 6 Finding local RR events
Page 6 Member News
Page 6 Meeting Schedule
Page 7 Basic FVD info
Page 7 FVD Board members

Semaphore Editor:

Walt Herrick, Jr.

waltherrickjr@gmail.com

**Next FVD Meeting:
Sunday, April 28**

**1:00 pm EARLY START at
the Morava Rec Center in
Prospect Heights**

FVD Elections this meeting!

**Contest: Humorous Open
Load**

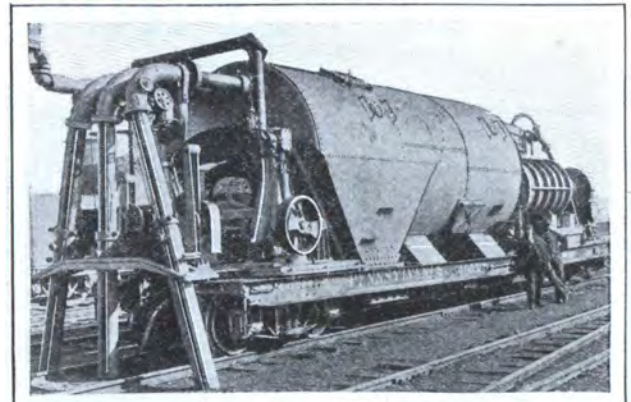
**Clinic: "Keeping Your RR
in Focus" by Jim Osborn**



The newest layout at the Suncoast Center for Fine Scale Modeling in Odessa, FL just north of Tampa, is the O scale Great Lakes Industrial Railroad. The layout is the brain child of Jim Hopes who designed most of the layout. "I wanted to do something different than all of the narrow gauge fine scale layouts we have here at the Center. A mid-western, standard gauge, rust belt Great Lakes industrial theme really appealed me. I also wanted a layout you could operate prototypically and not just use for display running," Jim told me when I was at the Center in January. So, he and others set to work a little more than a year ago, building the Great Lakes Industrial Railroad. "We've got a good start on it, but there's a lot more to do with detailing, structures, rolling stock, etc." Many modelers would be quite happy with the level of detail present on the GLIRR as it exists right now! Not only is *con't on p.2*

Fun Stuff by Jim Allen

So, what is this thing? It's a Rail Vacuum Cleaner, circa perhaps the 1930s sometime? The photo shows the complete unit. It operates by a steam locomotive backing up, and then drawing the huge vacuum cleaner to it by means of cables and a motor driven drum. The engine then pulls the cleaner about fifteen feet in one move at a time. During the move, the three huge suction pipes pick up dirt and debris. Two pipes work outside the rails, and one pipe swings inside the rails moving from rail to rail. Power is supplied to the vacuum from the steam locomotive. Pretty wild machine, huh?



Layout of the Month: Great Lakes Industrial RR con't

from p. 1 there a lot of detail, it is realistic detail. The details look like they are supposed to be there and that they've been there for a long time. Besides the great detailing, the Suncoast Center is known for, another great scenic feature of the layout is its backdrop. It is a combination painted back drop with an overlay of photos from various sources. They've done a great job seamlessly blending the two techniques and also using some very large photos of industrial buildings which you don't see that often. The result is nice illusion of depth on this narrow layout. The layout is well lit with rope LEDs, and the darkly painted fascia is neat and functional. Small con't on p.3



In the photo directly above, the *Mary E.L.* tug boat is holding a car float fast against the wharf while the switch crew pulls the last car off of the float. Note the subtle rust on the tug's stack, hand rails, deck, and life boat. In the upper right shot, real dirt, ballast, ground foam, static grass and lots of detail cover a base of pink insulation foam on the GLI layout. LED rope lights hidden behind a 6 inch black valance, provide excellent, bright, even lighting for the layout. Sundance Center members encouraged youngsters (and oldsters!) to take a turn at the throttle of the Great Lakes Industrial Railroad (right). The young Cleveland Browns fan felt right at home running a switch engine on a model railroad that very well could be actually depicting a past Cleveland waterfront scene.



Layout of the Month: Great Lakes Industrial RR con't



A mirror is used on the right end of the layout to give the illusion of length to the tracks and buildings in the scene (top). Note the interesting and realistic wall treatments on the old industrial building in the center photo. In the bottom photo, its very early in the morning as an N&W geep in its original blue and gold paint, idles on a yard track near the car float, awaiting its first assignment of the day.

Basic Layout Information

Layout Name:	Great Lakes Industrial RR
Layout Builders:	Jim Hopes, Frank Palmer Jon Addison, Dave Revelia, Tim Godfrey, Richard Smith, Keith Wolfe
Layout Location:	Suncoast Center for Fine Scale Modelers in Odessa, FL
Layout Scale:	O
Layout Size:	3 x 18 feet in three 3 x 6 foot sections
Layout Style:	Shelf layout
Layout Theme/Locale:	Loosely based on water front industrial areas in Cleveland, Toledo, etc.
Layout Era:	1970s
Construction begun:	Early 2018
Bench Work:	1 x 4 grid
Sub Roadbed/roadbed:	2 inch pink styrofoam
Track:	Code 100 flex track; Fast Tracks Turnouts
Scenery:	Painted & photo back drops; real dirt, ballast, natural vegetation, static grass, ground foam, etc.
Detail:	Super detailed throughout
Structures:	Scratch built and kit-bashed
Locomotives:	Atlas with QSI sound
Rolling Stock:	Mixed manufacturers
Control:	Digitrax DCC
Operations:	Industrial switching
Other:	Also see the SCFFSM web site: www.finescalemodeling.org

from p. 2 Digitrax "Utility" throttles control the locomotives. Normally one loco is used for operating the layout, but two could be used. A typical op session starts with the switcher picking up any outbound cars from the car float and industries around the layout, and then spotting these in the small staging yard on the right side of the layout. Inbound cars are then picked up from the staging yard and distributed to the cart float and various industries on the layout. It's a great deal of fun operation with big O scale equipment in a relatively small space. Neat!



April FVD Elections

At our April 28 regular FVD monthly meeting we vote for the division's Assistant Superintendent and Paymaster. As of this writing, our incumbents in these positions, Assistant Super, Denis Zamirovski, and Paymaster, Tim Kleimeyer, are both running for re-election with no opposition. Below is some information about both candidates. WH

Denis Zamirovski (top photo) Denis has been an NMRA member since 1992, and the FVD's Assistant Superintendent since May 2018. At that time, he was asked by the FVD board to assume the position following the resignation of Bob Shlemon, Jr. who has since moved to Nashville. Denis is a dedicated FVD member. He regularly attends monthly meetings and enters our monthly contests. He retired from a career in the steel industry, and is now active with the Steel workers Organization of Active Retirees (SOAR). Denis is a life long railfan, modeler, and railroadians collector, and would appreciate your vote.

Tim Kleimeyer (bottom photo) Tim has been the division's Paymaster since 2004 and has done an excellent job during his tenure. Prior to serving as Paymaster, he was the division's Assistant Superintendent. You will see Tim at most FVD monthly meetings, and his models regularly on our contest tables. As the division's Paymaster, he serves as the division's chief financial officer and is responsible for the division's financial records and matters. Tim is an HO modeler with a layout in progress. He enjoys being Paymaster and would like to continue serving the division in that capacity. He welcomes your vote.



Midwest Region & Thousand Lakes Region 2019 Joint Convention

This year's Midwest Region Convention
will be a joint convention with the
Thousand Lakes Region in:

LaCrosse, Wisconsin May 17-19

For convention information go to:

<https://www.thousandlakesregion.org/>



You're Invited to Enter a MWR/TLR Contest! By Kennedy Gauger

Hi, I'm Kennedy Gauger, Contest Director for the Thousand Lakes Region of the NMRA. I'd like to invite you to come up to our Grand Junction Joint MWR/TLR Regional Convention in LaCrosse, WI, and to participate in a model, photo, and/or arts and crafts contest at the convention. We'd love to see a bunch of models, crafts and photos in LaCrosse in May, and we'd especially love to see *your* model or photo or arts and crafts entry. If you've never entered a model contest, this is the place to do it! You may enter as a "Novice" participant if you like, or jump right in to the Master Class. We are very friendly up here in the TLR, and we will welcome you with open arms. We have many "popular vote" contest categories, as well as the many regular "judged" contest categories. All contests require you to fill out a simple NMRA 901 "entry blank" for you model or photo. If you'd like your model judged by experienced NMRA judges, you'll also need to fill out an NMRA 902 form describing the techniques you used to build your model. If you need help with the 901 or 902 forms, I can help you. Email me at: wkgauger@gmail.com, and I'll send you some helpful information. I look forward to seeing you with your model or photos, or arts and crafts entry in LaCrosse this May! **P.S. Our Lady Rails should note that "Operation Linus" will be active at this convention so bring along your sewing machines and join the fun!**

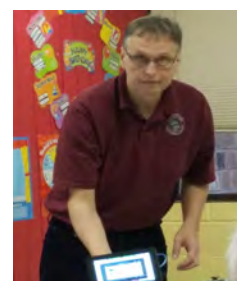
Mike's Minute by Mike Hirvela

This is the shortest "Mike's Minute I've ever written. It probably could be renamed "Mike's Couple of Seconds"! My message this month is simple: I encourage you to come to our April 28th regular monthly meeting to enjoy the meeting *and* especially to exercise your voting privilege as a FVD member. I look forward to seeing you **April 28th**. Remember, we start at 1:00 pm that day due to our elections. Now it's time for some trains!

March's Clinic and Contest Photos by Jim Osborn

Clinic

George K's March clinic was "**Arduino Devices, Part IV**". Over the past several years George has presented useful clinics on using these small electronic devices to do lots of things on your model railroad no matter what the size or scale. In his March clinic, George showed us how to use Arduinos with accessories, switch machines, and throttles. Thanks George, for another great and useful clinic! WH



Contest

March's contest, "Over, Under, Around and Through—Bridges, Signals, Tunnels, etc.", was **won by Jim Osborn** with his colorful red and green, prototypically inspired "Jousma Redi-Mix Plant (right). Jim faithfully modeled a small Redi-Mix plant with its maze of ladders and railings. He added appropriate LED lighting to top it off. Coming in **Second was Leif Hansen** with his nicely done HO_{n3} wood trestle (below left). Leif captured the look of a old narrow gauge trestle with its weathered bents, bracing and ties. **Third Place was won by Gary Saxton** for his Z scale "Sipples Crossing" steel bridge (below right). The detailing on Gary's model was exquisite especially considering it was done in Z scale! Go to www.foxvalleydivision.org for larger photos of these great models. **April's contest is "Humorous Open Loads"** to honor April Fools Day, of course! **See you April 28** for "loads" of laughs! (ouch!) WH



They're almost Gone!

Our FVD special run **Cook Orchards reefer car** done by Accurail is almost gone! Each car costs \$23.00 plus shipping and handling of \$7.50 for one car, and \$14.00 for 2 to 4 cars (if available). Go to the FVD's web site:

www.foxvalleydivision.org

for complete purchase and shipping information. We have only a few cars left, so act now! (Photo by Jim Osborn taken on his layout.)



Where to Find Railroad Events or Activities

Looking for railroad events or activities to attend? You can directly check out the “RR Events” page of the FVD web site at: <http://www.foxvalleydivision.org/fvd2016/rrevents.v2.html>. Or, you can go to the web site, click on the “Community” tab, and then go to “RR Events”. By the way, if you ever hear or know of an interesting railroad event, please send it to me at my contact info on p. 7 of this newsletter so we can share it with everyone. Thanks! Jim Osborn

Member News

Membership Services Trainmaster, **Bert Lattan** reports that as of February 28, the FVD’s membership stands at 196, up one from January....Bert also reports that we have **two new members: Douglas Moeller from Elk Grove, and Rich Hoker from Glenview**. Welcome aboard Doug and Rich! Be sure to ask any of our members or BoDs if you have any questions because we are here to help....FYI, your FVD BoD faithfully met once per month at Chessies Restaurant in Barrington this winter despite the rotten—*really* rotten—winter weather northern Illinois has had the past several months... **Model Railroader Video Plus Editor, David Popp**, recently completed an 8 part video series for MRVP on track planning using the FVD town **Crystal Lake, IL** for inspiration. Popp chose to design a plan for the mid-1950s era when steam was still in service and the road had not yet purchased their famous yellow and green, bi-level, push-pull commuter consists. David grew up near Crystal Lake in Ridgefield, IL.... Be sure to come to **our April 28 regular meeting at the earlier 1:00 pm start time** due to our **annual elections**. WH

Modeling Tip-Super Detailing Part 2

Below is some more super detailing inspiration from the Sun Coast Center of Fine Scale Modeling, this time from their Great Lakes Industrial O scale layout. This mini scene would be pretty easy and pretty neat to duplicate in any scale. WH



2018 - 2019 Fox Valley Division Meeting Schedule

All meetings are held from **1:30 to about 3:30 pm** (except as noted under “Other” below) at the **Gary Morava Recreation Center, 110 W. Camp McDonald Road, Prospect Heights, IL 60070**. Visitors are always welcome per the NMRA’s visitor policy. Note that clinics are subject to change without notice. For the latest clinic and all FVD news and information, visit our web site at www.foxvalleydivision.org.

<u>Date</u>	<u>Clinic</u>	<u>Contest</u>	<u>Other</u>
Apr. 28, 2019	Keeping Your RR in Focus by Jim Osborn	Humorous Open Load	1:00 pm start for Officer Elections
May 19, 2019	Midwest/Thousand Lakes Joint Regional Meet in LaCrosse, WI. For info, see https://www.thousandlakesrgion.org . Also, see pages 9—12 of the Winter issue of the Midwest Region <i>Waybill</i> newsletter for convention information and convention registration forms. Note, the special room rate for this convention is \$67.00 at the Days Inn LaCrosse!		
June 2, 2019	Modular Construction of User Objects in AnyRail by Carl Wagus	Vehicles—limit 3	Last monthly meeting for 2018 – 2019
July 7—13, 2019	NMRA 2019 National Convention in Salt Lake City, UT. See the convention’s web site for more information: www.nmra2019slc.org		



About the Fox Valley Division

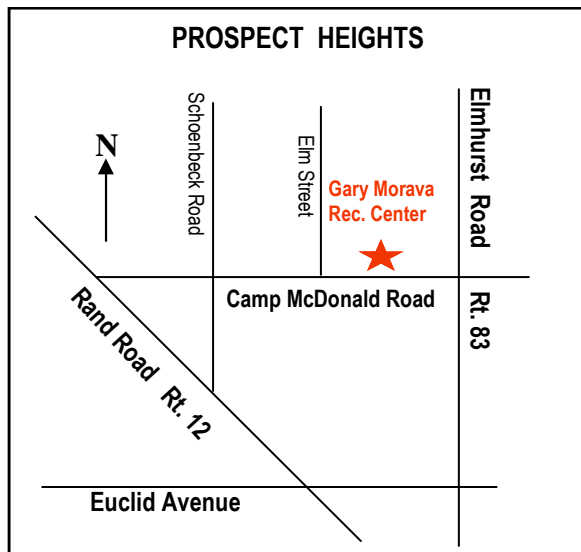
If you receive this newsletter you live in the Midwest Region and Fox Valley Division of the National Model Railroad Association or NMRA. The Fox Valley Division (FVD) includes all of Lake and McHenry, and parts of Cook and Kane Counties in northeast Illinois. About 195 members of varied ages and modeling ability levels belong to the FVD. Almost all modeling scales are represented in our division. Membership in the division is free as are the Semaphore newsletters.

FVD monthly meetings are held September through May at the Gary Morava Recreation Center in Prospect Heights from 1:30 to about 4:00 pm. Each meeting features a clinic, model contest, information of interest to the membership, and a time for socializing. Outings, layout tours, and operating sessions are also held periodically in addition to, or instead of, the monthly meetings. To promote the hobby of model railroading, the FVD sponsors and runs the large train show called "High Wheeler" in early March each year at Harper College in Palatine, Illinois.

We encourage you to take advantage of all the FVD has to offer. We are here to answer your questions, help improve your modeling, and help you better enjoy the great hobby of model railroading. Join us at a FVD meeting or outing and bring a friend. We'd love to see you. Also visit us on the web at:

www.foxvalleydivision.org.

Questions? Contact FVD Superintendent, Mike Hirvela, or any FVD Board member listed below. We are here to help!



- The FVD's monthly meeting is at the :
Gary Morava Recreation Center
110 Camp McDonald Road
Prospect Heights, IL. 60070
- Our regular meeting time is:
1:30 to about 3:30 p.m.
- 2015 – 2016 meeting dates, contest and clinic info are on page 6 of this newsletter.

FVD web site: www.foxvalleydivision.org

FVD mailing address: Fox Valley Division
Midwest Region-NMRA
P.O. Box 1535
Arlington Heights, IL
60005-1535

Fox Valley Division Board Contact Information

Superintendent, **Mike Hirvela**
mhirvela1@gmail.com 847-360-9579

Assistant Supt., **Denis Zamirowski**
zam972@aol.com 312-590-6472

Chief Clerk, **Carl Wagus**
crwagus@mail.com 847-516-2016

Paymaster, **Tim Kleimeyer**
kleimeyert@comcast.net 847-426-4732

Achievements & Contests, **Jim Landwehr**
jlandwehr901@yahoo.com 847-577-7984

Clinics & Programs, **David Leider, MMR**
sooauthor@netzero.com 847-253-7484

Membership Services, **Bert Lattan**
nswnmra@comcast.net 847-295-7959

Membership Promotions, **Mike Hirvela**
mhirvela1@gmail.com 847-360-9579

Public Relations, **Vacant**

Web Technologies, **Jim Osborn**
FVDWebsite@comcast.net 815-578-8315

Publications/Semaphore Editor, **Walt Herrick**
waltherrickjr@gmail.com 815-355-2003

Ways & Means—High Wheeler Show Manager
Vacant